

MG7TM

MINI-GAP FLANGE SPREADER

SPREADING FORCE = 6.8 T (68 kN) per tool

It is recommended that tools are used in pairs giving
2 x 6.8 = 13.6 T (136 kN)

SPREADING DISTANCE = 0-27mm (0-1.06")

TOOL WEIGHT = 5 kg (11.05 lbs)

KIT COMPONENTS

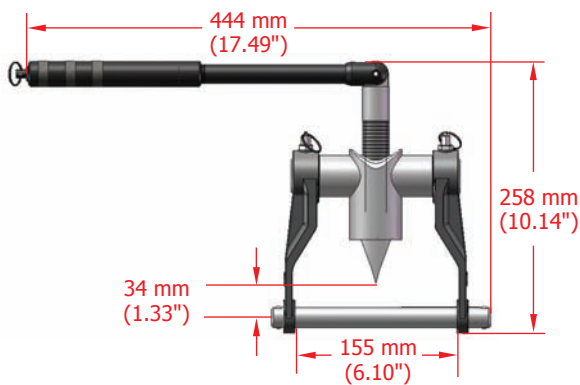
- 1 x MG7TM Tool
- 2 x Spreading Bar
- 1 x Instruction Manual
- Product Code: MG7TMSTD



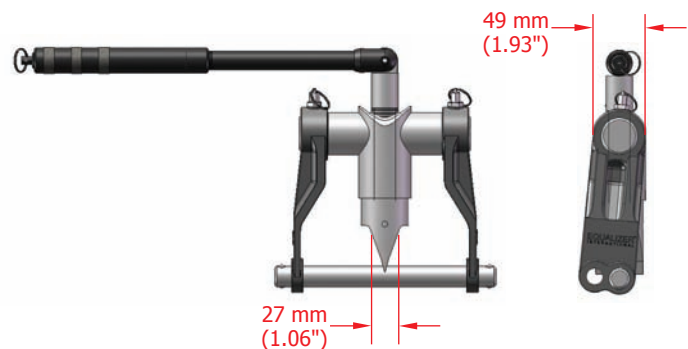
WEIGHTS AND DIMENSIONS

TOOL WEIGHT = 5 kg (11.05 lbs)

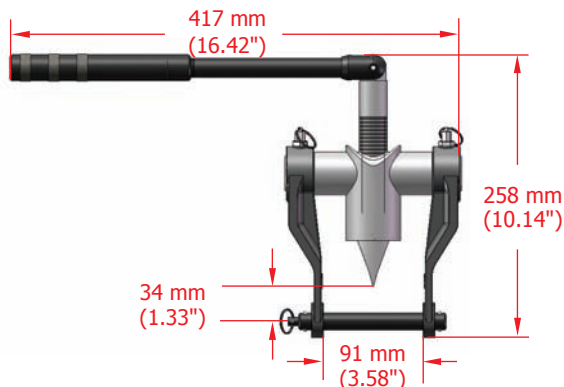
TOOL CONFIGURATION 1 - OPEN



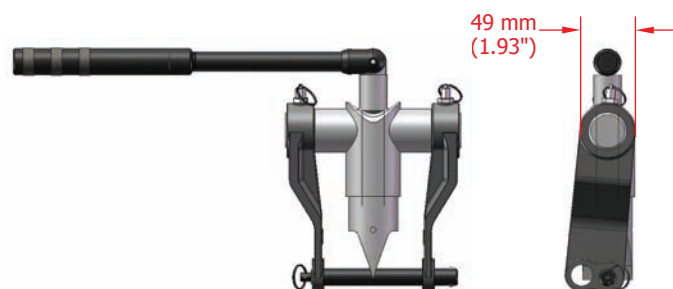
TOOL CONFIGURATION 1 - CLOSED



TOOL CONFIGURATION 2 - OPEN



TOOL CONFIGURATION 2 - CLOSED





RANGE OF APPLICATION

BY FLANGE TYPE, CLASS AND DIAMETER

BS10 flanges:

Class H: 1/2" Thru 24"
Class J: 1/2" Thru 24"
Class K: 1/2" Thru 20"
Class R: 1/2" Thru 20"
Class S: 1/2" Thru 16"
Class T: 1/2" Thru 13"

ASME B16.47

(including weld neck and blind flange):

26" Thru 60" for the flange class 150 and 300

ASME B16.5 weld neck:

2" Thru 48" for the flange class 150
3/4" Thru 48" for the flange class 300

ASME B16.5 socket welded:

2" Thru 3" for the flange 150
3/4" Thru 3" for the flange 300

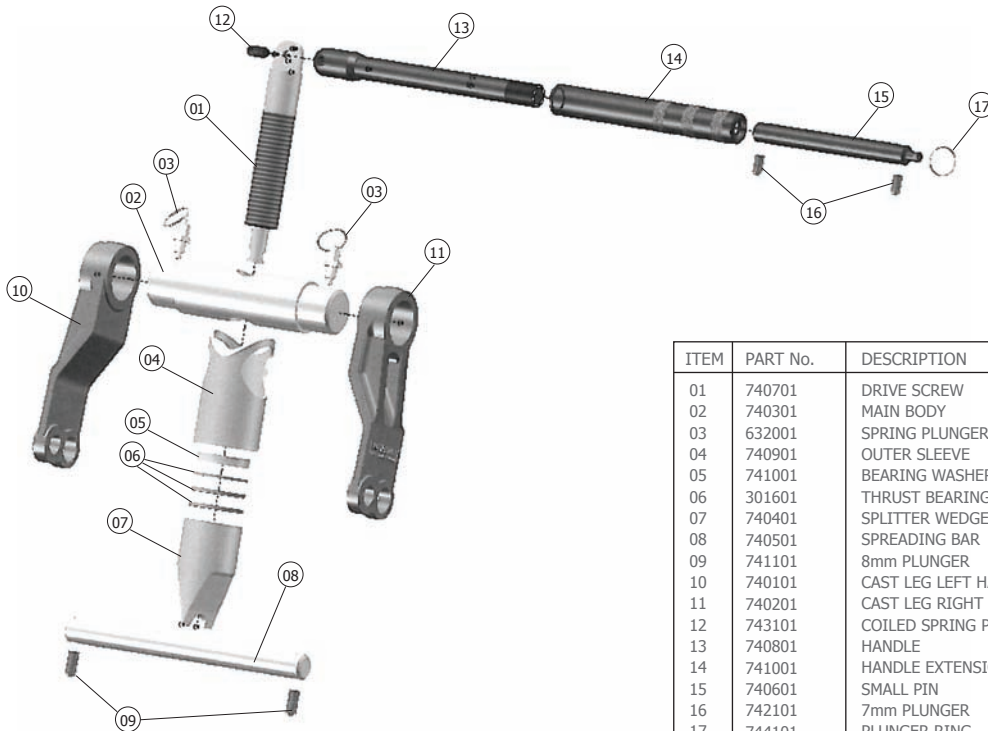
ANSI reducing application (including threaded and slip on flange):

2" Thru 48" for the flange class 150
3/4" Thru 48" for the flange class 300

ANSI orifice application (including weld neck, threaded and slip on flange):

1" Thru 20" for the flange class 300

PARTS LIST AND EXPLODED DRAWING



ITEM	PART No.	DESCRIPTION	QUANTITY
01	740701	DRIVE SCREW	01
02	740301	MAIN BODY	01
03	632001	SPRING PLUNGER	02
04	740901	OUTER SLEEVE	01
05	741001	BEARING WASHER	01
06	301601	THRUST BEARING SET	01
07	740401	SPLITTER WEDGE	01
08	740501	SPREADING BAR	01
09	741101	8mm PLUNGER	02
10	740101	CAST LEG LEFT HAND	01
11	740201	CAST LEG RIGHT HAND	01
12	743101	COTLED SPRING PIN	01
13	740801	HANDLE	01
14	741001	HANDLE EXTENSION	01
15	740601	SMALL PIN	01
16	742101	7mm PLUNGER	02
17	744101	PLUNGER RING	01